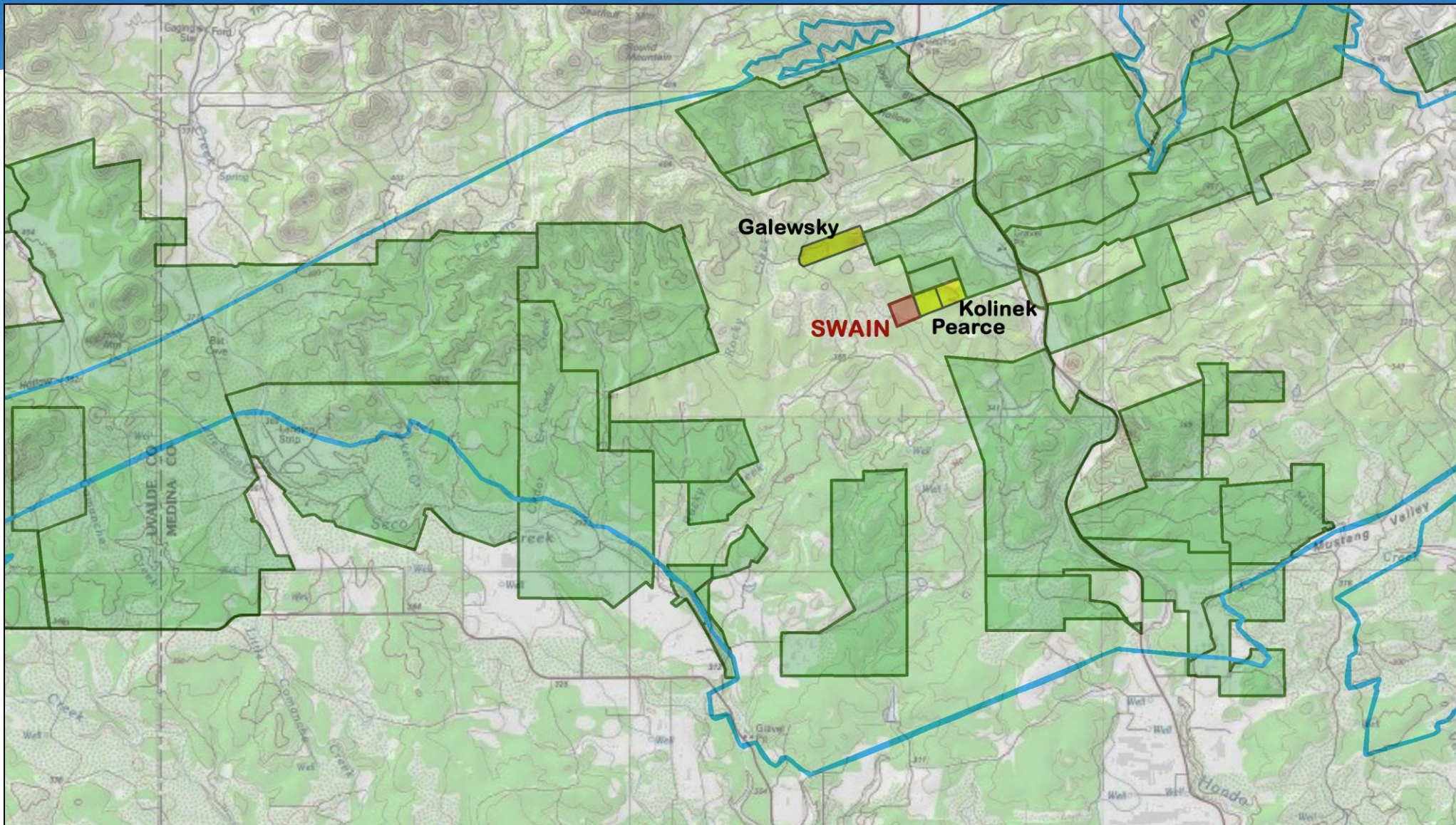


The Nature Conservancy



Swain Ranch
Froboese Ranch
Sycamore Creek Ranch

Medina County

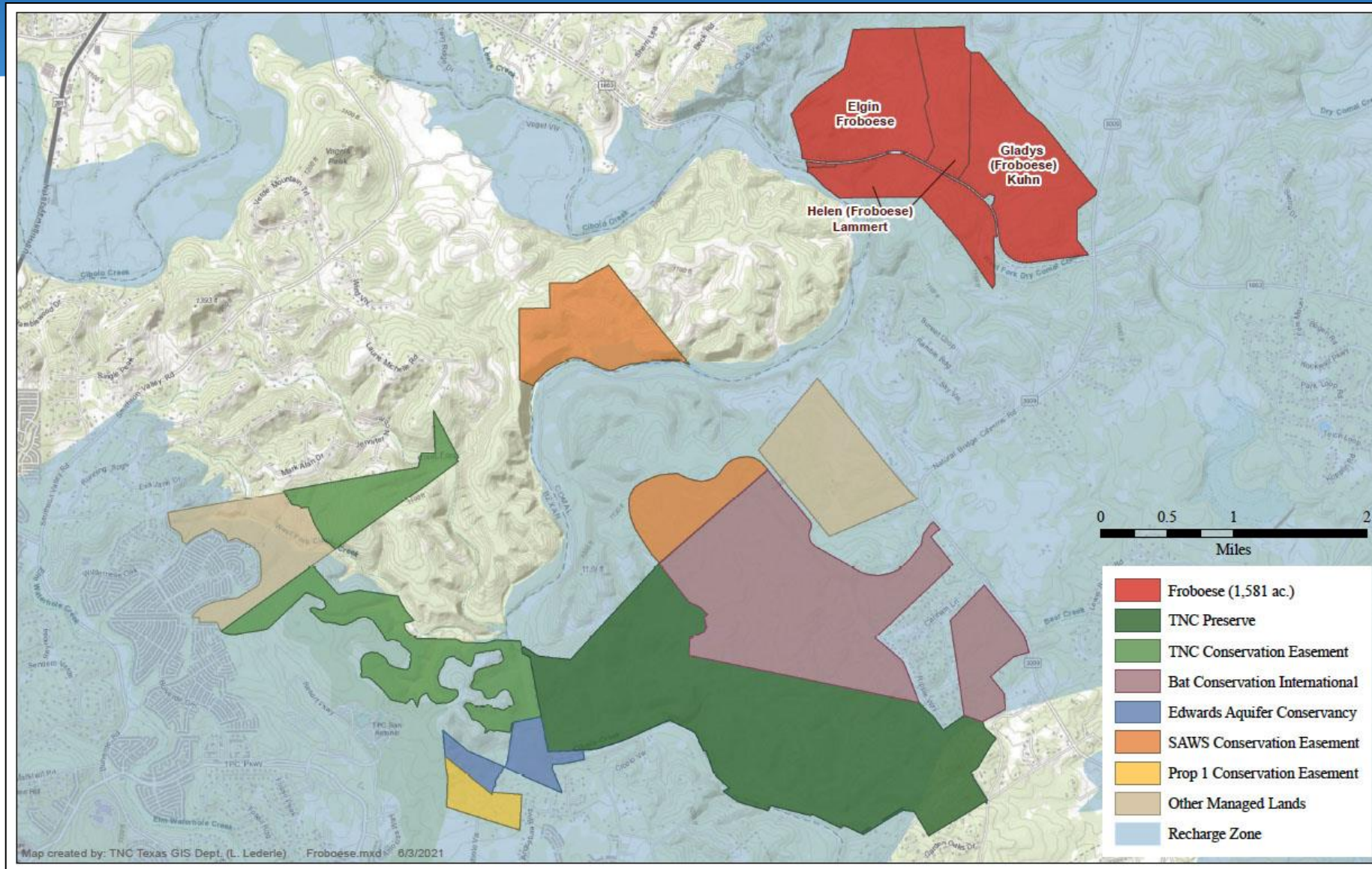


Swain Ranch – 57.469 Acres Medina County

- Located in Contributing Zone adjacent to Pearce, Jagge-Foley
- Hondo Creek watershed
- EAA report ranked as high water quantity, very high water quality
- **Requesting final approval**



Froboese Ranch – 1,581 Acres Comal County



Froboese Ranch – 1,581 Acres Comal County

Froboese Ranch

- Mostly owned by the Estate of Elsa Froboese (dec'd); to be partitioned between her three children– Gladys Kuhn, Helen Lammert and Elgin Froboese
- East tract (Kuhn) contains West Fork Dry Comal Creek; other tracts contain Cibolo Creek
- Entirely in Recharge Zone; located near Natural Bridge Caverns, SAWS easements, and Bracken Bat Cave and Cibolo Bluffs Preserves (owned by TNC/BCI; funded by EAPP, Bexar County, EAA, and ACUB)

Froboese Ranch

- EAA reports ranked all three tracts as very high water quality, very high quantity benefit
- Geary Schindel stated that the property has the most significant karst features of any property he evaluated for EAPP; 18 caves, including two 1,000+ feet long and ~100 feet deep, and at least 17 additional documented sinkholes and pits. Features are located on all three future partitions, with highest concentration on east and middle partitions.

➤ **Requesting Stage 2 approval**

Froboese Ranches (1,581 Acres) Comal County



Fern Cave entrance (East Froboese Ranch partition)



Summer Cave entrance (East Froboese Ranch partition)

Froboese Ranches (1,581 Acres) Comal County



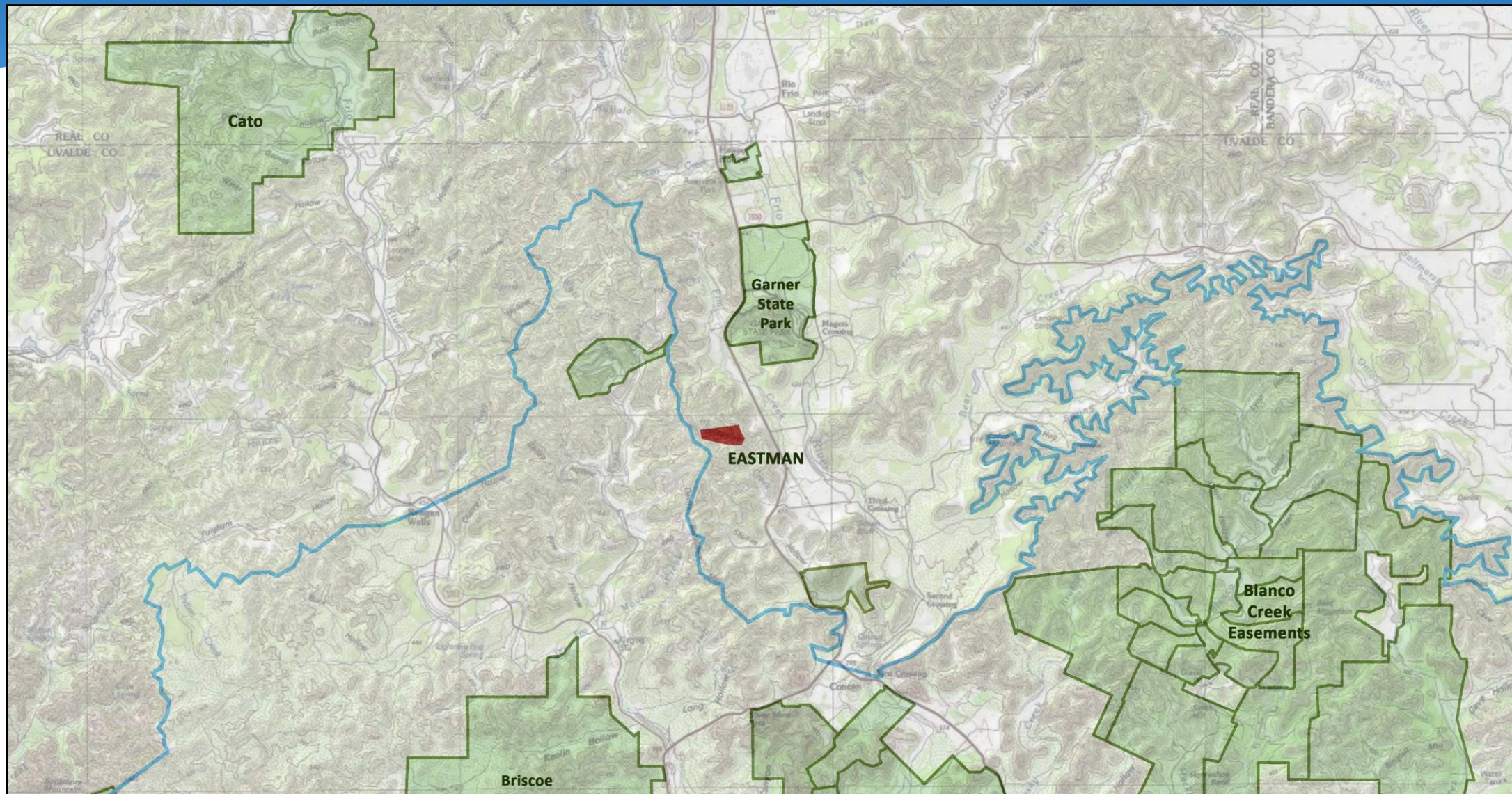
Shadow Cave entrance (West Froboese Ranch partition)



Quantum Leap Cave entrance (Middle Froboese Ranch partition)



Sycamore Creek (Eastman) Ranch – 105.99 Acres Uvalde County



Sycamore Creek Ranch

- New property located near Garner State Park, High Places Ranch, Shut-in Valley and Mikeska ranches
 - In Contributing Zone but in rapidly developing area; contains canyon and headwaters of Sycamore Creek (flows into Frio River)
- **Requesting Stage 1 approval**